

DRAWING NUMBER
56/12

DRAWING NUMBER

DRAWING NUMBER

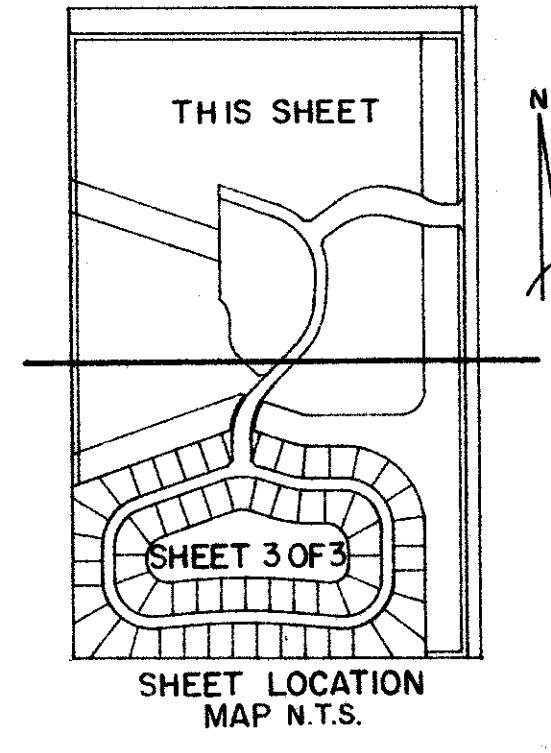
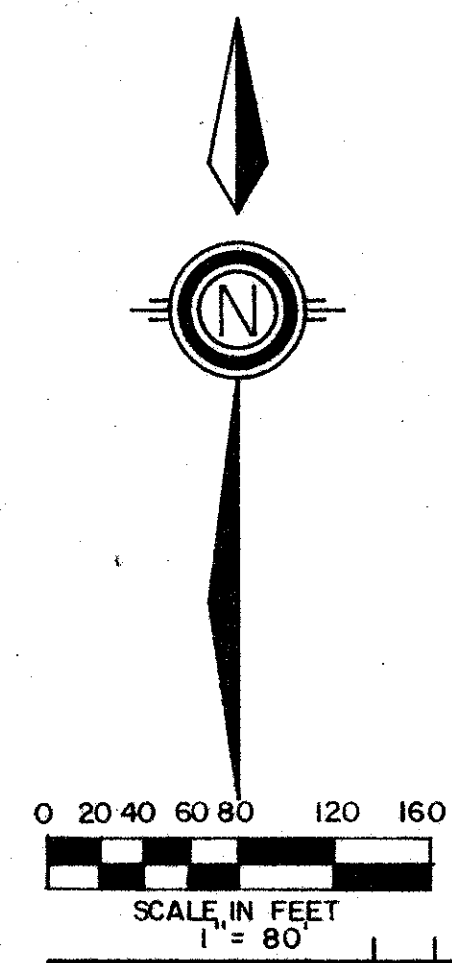
DRAWING NUMBER

THE NEWPORT BAY CLUB, A P.U.D.

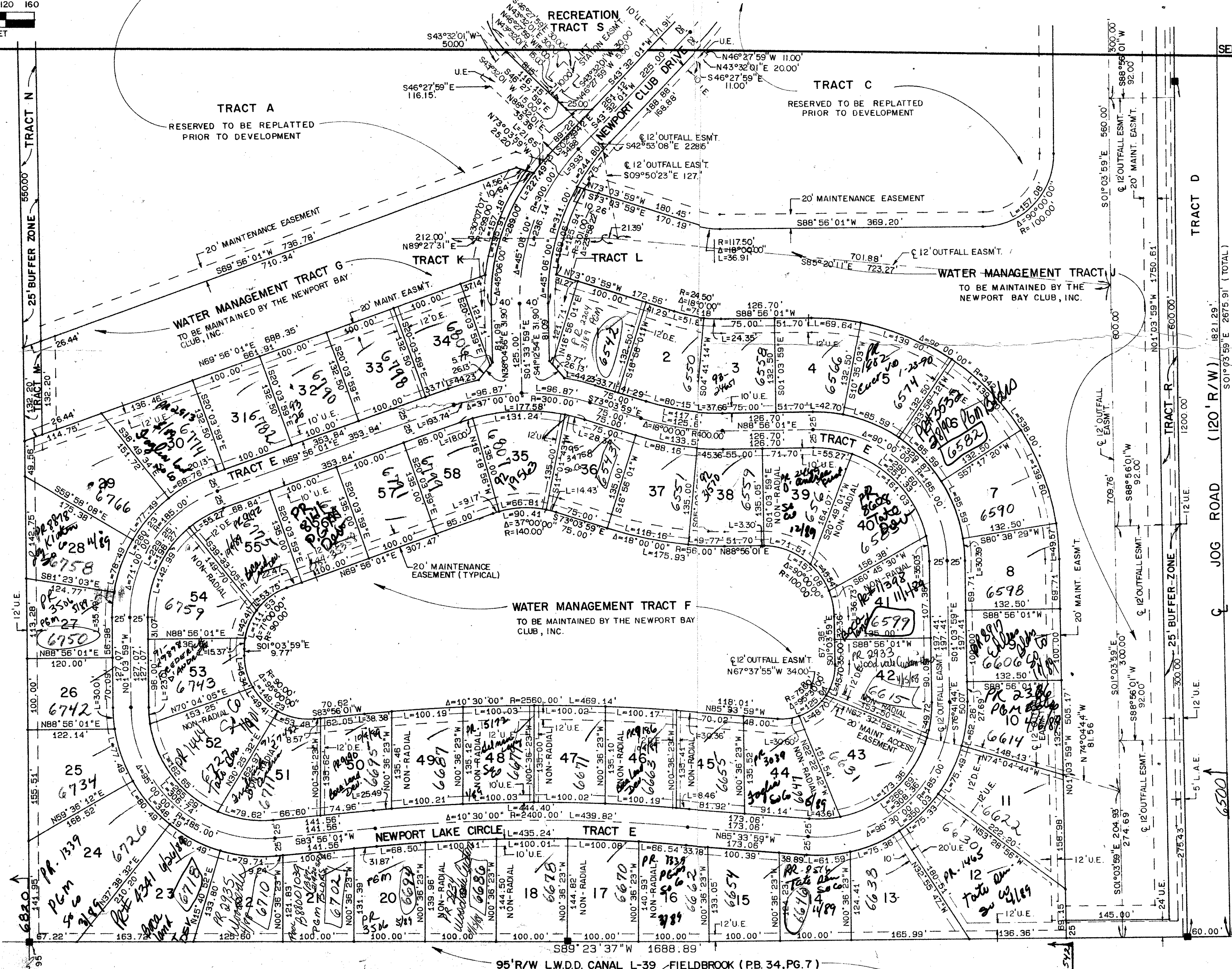
SITUATE IN SECTION 34, TOWNSHIP 46 SOUTH, RANGE 42 EAST
PALM BEACH COUNTY, FLORIDA

SHEET 3 OF 3

12



STATE OF FLORIDA
COUNTY OF PALM BEACH
THIS PLAT WAS FILED FOR
RECORD
THIS _____ DAY OF _____
AD, 1986 AND DULY RECORDED
IN PLAT BOOK _____ ON PAGES
_____ AND _____
JOHN B. DUNKLE, CLERK
BY: _____, D.C.



SEE SHEET 2 OF 3
MATCH LINE

3/17/87 34/46/42
SUBDIVISION - Newport Bay Club
BOOK 56 PAGE 12
FLOOD ZONE B
QUAD # 37
RE 85-167
PUD NAME
ZONING RTSPD
CORRECTION 33434

003
0505-003

56/12

APP. BY *[Signature]*
CHECKED BY BT

Meridian		2000 LOMBARD STREET WEST PALM BEACH, FL.	
Surveying and mapping			
DRAWN	M.E.H.	DATE	9/2/86
CHECKED	D.M.W.	SCALE	1" = 80'
DRAWING NO.	86-P-041	THE NEWPORT BAY CLUB A P.U.D.	